

BUILT BY OUR FAMILY FOR YOUR FAMILY SINCE 1989



EENIGENBURG
 BUILDERS INC
THE BENTLEY

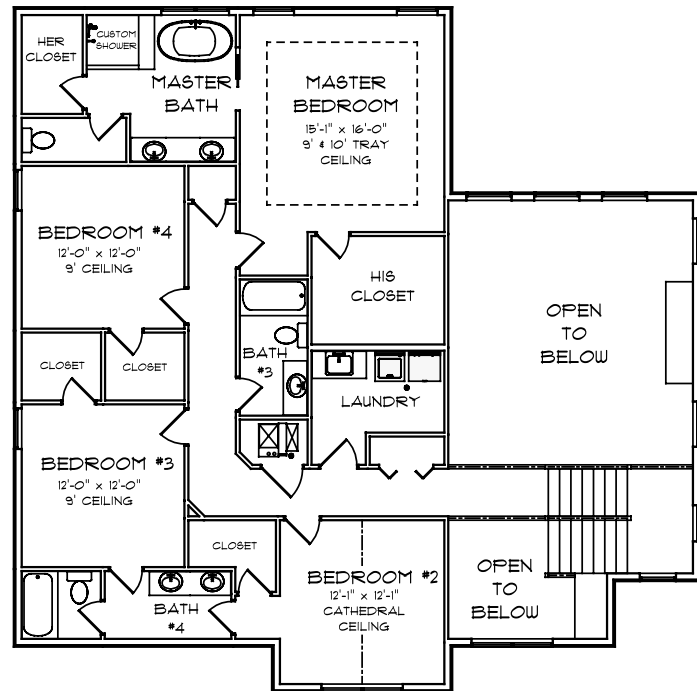
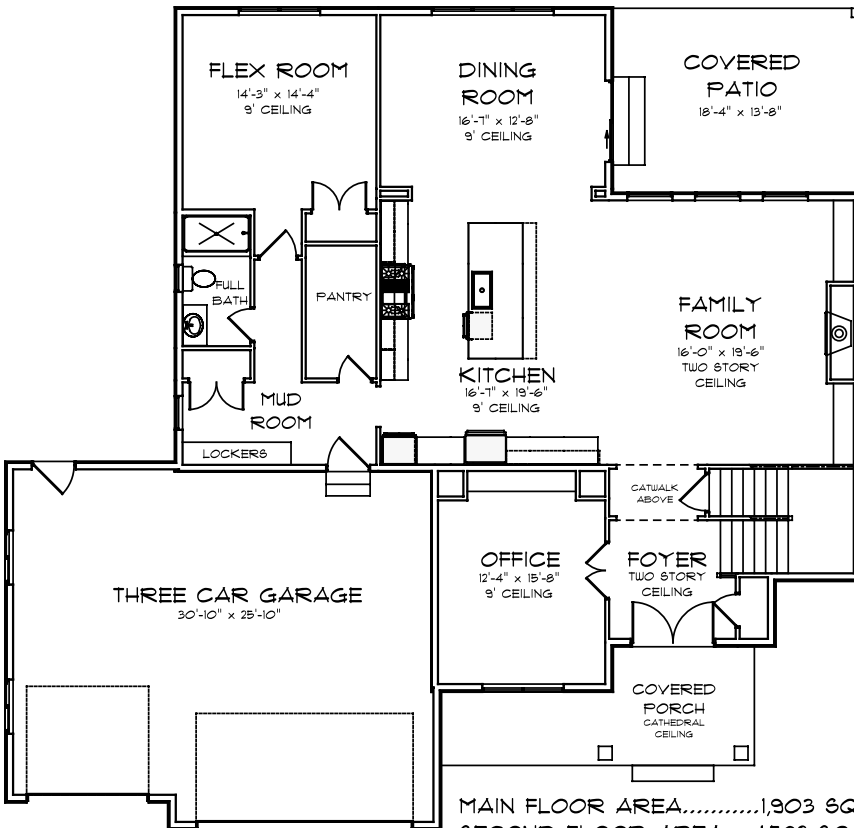
\$899,900*

* PRICE SUBJECT TO CHANGE WITHOUT NOTICE

- 5 BEDROOMS
- 4 BATHROOMS
- 3 CAR GARAGE
- 3,485 SQ. FT.

9410 TALL GRASS TRL., ST. JOHN, IN
 LOT # 431 PRESERVE SUBDIVISION

- TWO STORY FAMILY ROOM
- COVERED PATIO
- CATWALK TO SECOND FLOOR
- LARGE CUSTOM KITCHEN



MAIN FLOOR AREA.....1,903 SQ. FT.
 SECOND FLOOR AREA.....1,582 SQ. FT.
 TOTAL AREA.....3,485 SQ. FT.

SEE BACKSIDE FOR
 ADDITIONAL DETAILS



*FEATURES SUBJECT TO CHANGE WITHOUT NOTICE

KITCHEN

- DOUBLE OVEN
- 36" FRIDGE, 36" FREEZER
- 36" RANGE TOP
- 36" CUSTOM BUILT RANGE HOOD
- 3 RACK DISHWASHER
- BUILT IN MICROWAVE
- 24" BEVERAGE COOLER
- WINE RACKS
- OVERSIZED ISLAND

STRUCTURE

- 10" THICK FOUNDATION WALLS
- CONTINUOUS STEEL BEAM IN GARAGE (NO LALLY COLUMN "DOOR DINGER")
- 2X12 FLOOR JOIST WITH ADVANTECH SUBFLOOR
- 2X6 EXTERIOR WALLS WITH BLOWN IN FIBERGLASS INSULATION
- PLYWOOD GARAGE/HOUSE WALL FOR INCREASED DIAPHRAGM STRENGTH
- ANDERSEN 400 SERIES WINDOW PACKAGE (BLACK ON BLACK)
- 6' WIDE X 8' TALL ANDERSEN PATIO DOOR
- THERMA-TRU 6' WIDE X 8' TALL DOUBLE FRONT DOOR
- 3'X8' FIBERGLASS GARAGE/HOUSE DOOR AND GARAGE SERVICE DOOR

TRIM

- 8' TALL DOORS ON MAIN FLOOR
- CUSTOM BUILT WOOD RANGE HOOD SURROUND
- CUSTOM BUILT LOCKERS IN MUDROOM
- CUSTOM BUILT FIREPLACE SURROUND
- CUSTOM BUILT-INS IN OFFICE
- 7-1/4" BASE ON MAIN FLOOR
- 5-1/4" BASE ON SECOND FLOOR
- 3-1/2" CASING
- DECORATIVE PEDIMENT TRIM ABOVE ALL WINDOWS & DOORS

